

ROYAL ANALYZER

BASIC

HEADLINE

ROYAL ANALYZER BASIC contains all specifications that may be needed by the prospectors for treasures and burials, to be ranked firstly among all imaging tomography detectors to 18 meters as a depth



Phone: +15208005005



E-Mail: info@brdetector.com



Website: www.brdetector.com

USER MANUAL



Table of contents

Table of contents -----	1
Introduction-----	2
Parts and components of the Royal Basic -----	3
Certificate of Conformity -----	4
Operating modes for the device - 3D ground scan program -----	5
Operating modes for the device - Live scan program -----	6
Continue Live scan program-----	7
Start with the device - Live scan program-----	8
Start with the device - Sonar scan program -----	9
Features and specifications of the device -----	10
Start with the device - 3D scan program-----	11
Analysis and interpretation of graphs -----	12
Continued analysis and interpretation of graphs -----	13
Important notes about using the device -----	14
General Notes on Use -----	15

Dear customer: first of all thank you for purchasing our product.

We recommend that you carefully read this user manual in order to understand how the products work and to carry out testing to gain experience. This is a scientific and electronic device, and all instructions in the manual must be done carefully. We wish you success in your endeavours.

ATTENTION! ALWAYS READ THE LABEL BEFORE USING



The information contained in this manual is subject to change without notice. The reproduction, distribution or copying of this user manual is strictly prohibited without the permission of BR SYSTEMS Detector company

General Information

As with electronic devices, **ROYAL ANALYZER BASIC** device must be used with care. Care should be taken for scan titles, main unit and scan sensors, must be protected against shocks and hard objects, and excessive force mustn't be applied to the connectors.

Injury

When normally used, Royal Analyzer Basic products do not cause injury or health issues. Royal Analyzer Basic products generally do not constitute a threat to the human body.

Repair

All repairs resulting from technical faults are free of charge for two (2) years from the date of the product purchase. Consult your dealer regarding product services or questions. The unit is examined by a qualified technician and repaired if necessary. All repairs will be charged after two years.

**In the event that you damage the product or open the box,
the warranty will be invalid.**



You will receive the device's pieces as shown below



DEVICE CONTROL BUTTONS

ON / OFF: It enables you to open the device.

START BUTTON: It enables you to start the automatic search and to send constant signals during manual search.



The buttons on the main unit of the device;

AUTO: It enables you to start automatic search.

MANUAL: It enables you to start manual search.

LIVE: It enables you to start live search.

BACK: It enables you to end the search.

ON/OFF: This guide you that there are power access, and other buttons for volume control



ROYAL ANALYZER BASIC : was certified under
EC CERTIFICATE(S) : EN ISO 1682:2015
LLa,Rule 978, 5 Quality Assurance System



OPERATING MODES

First of all, you have to turn the system on and stand by to search.

To prepare the device for the data reception, first insert the external battery in to the product. Then switch on the **ON/OFF** button on the handle.

Once the system is turned on, all the led lamps will light up on the button on the device. After 3 seconds, the LED lamps will turn off and the PC ON / OFF lamp will light up.



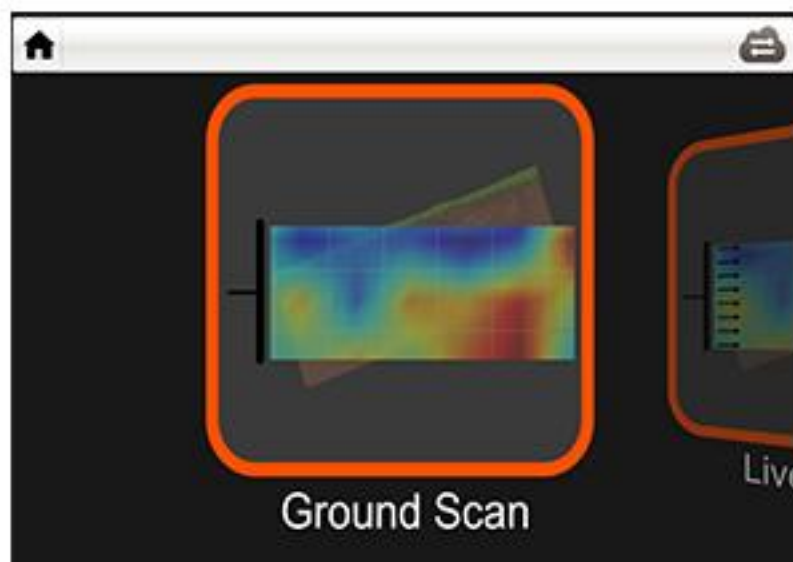
In the meantime, the system will be turned on and you do not need to do anything. PLEASE WAIT FOR A FULL STARTUP OF THE PC.

Once the system is fully turned on, the program on the PC will also be turned on automatically.

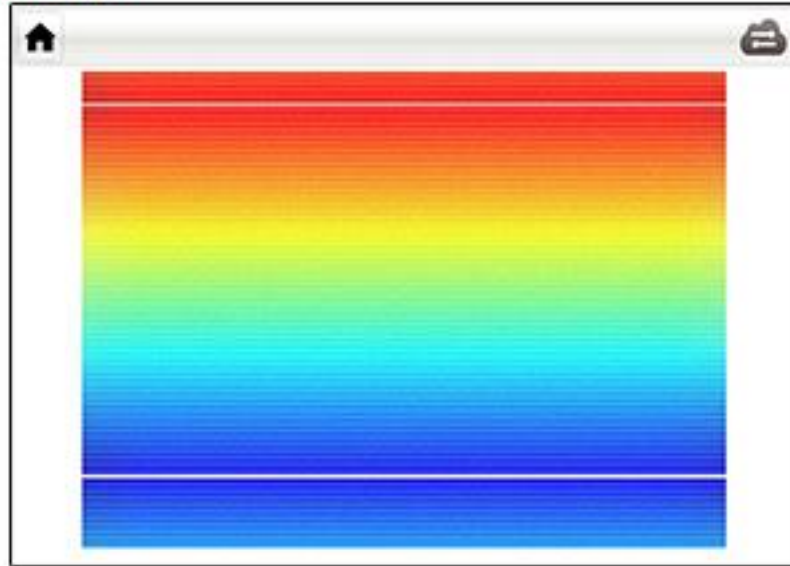
After the program run automatically, you can see the following

☒ **GROUND SCAN PROGRAM (3D) ,**

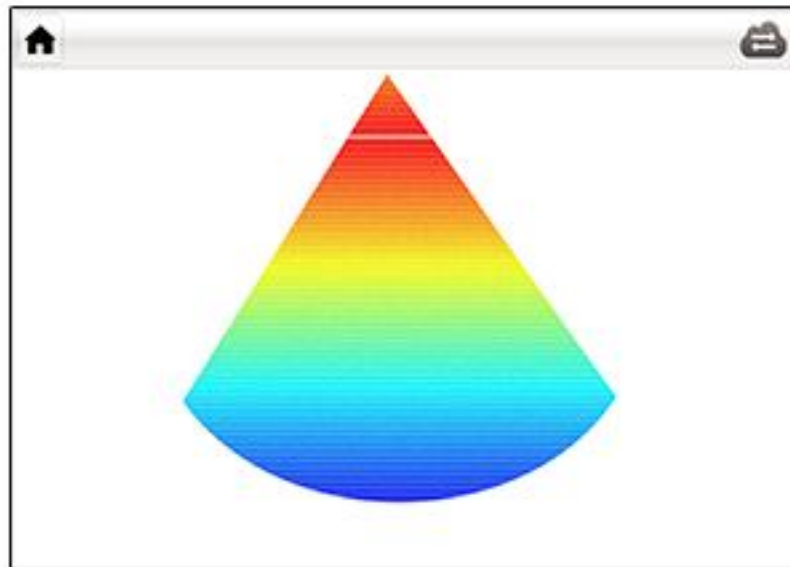
The most comprehensive and accurate search



✓ LIVE SCAN PROGRAM



✓ SONAR SCAN PROGRAM



Note: both programs (live and sonar) fall under the live scanning program but with different technology

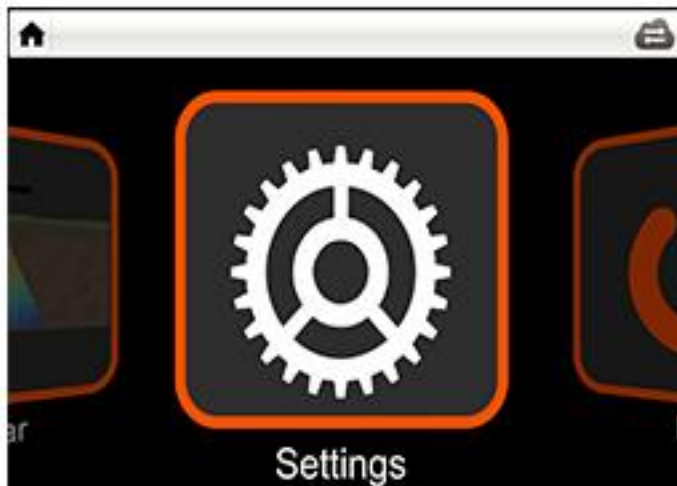


- ✓ The Settings: you can select appropriate language through it, and this device supports the work in several international languages



The user must set the time and date which is an important point so that the captured image will be saved and stored by the time of capture.

As well we can clearly control the screen lighting



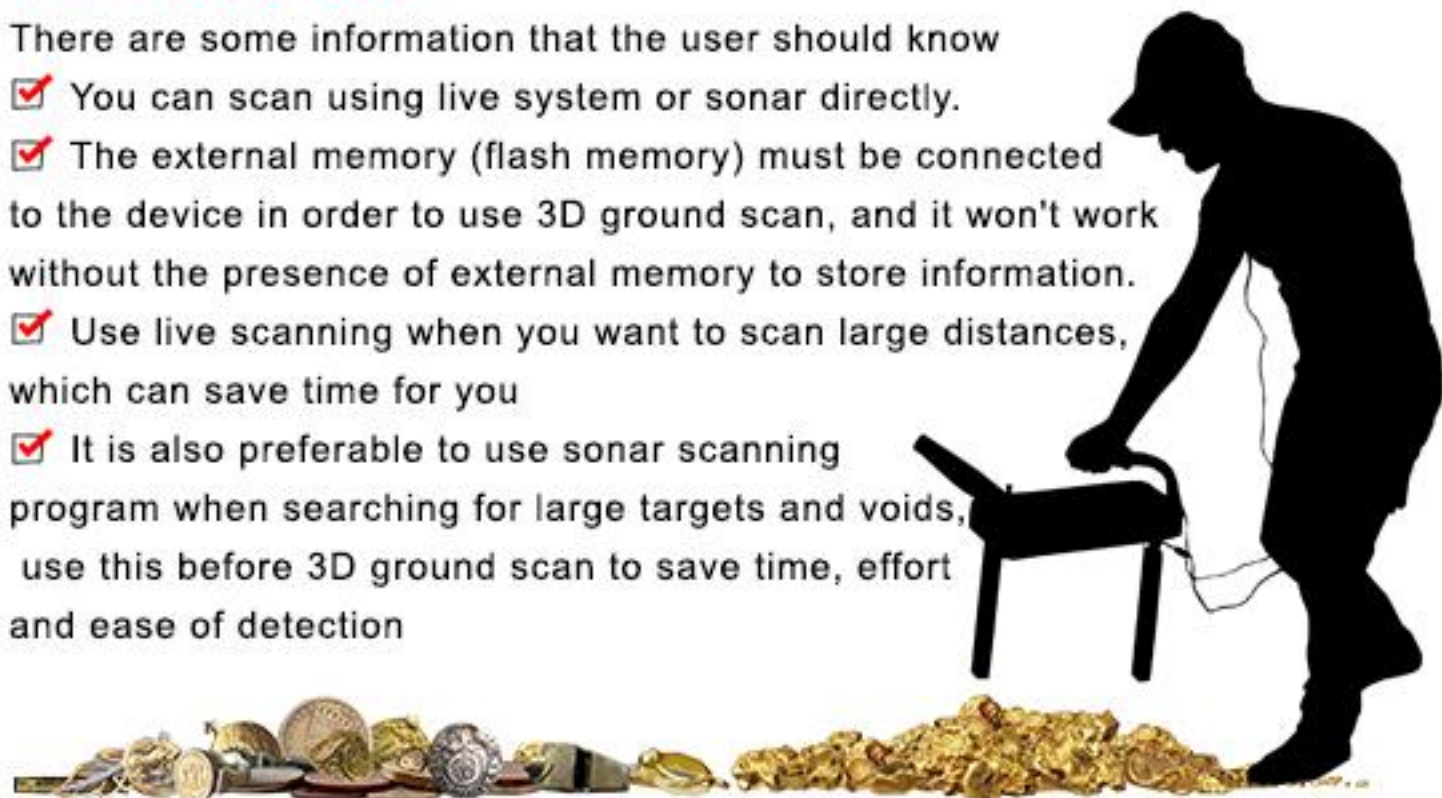
- ✓ Power and exit button to close the device, and we noticed at the top of the screen return back icon, and the icon of confirming the program connection to the device



How to use the device

There are some information that the user should know

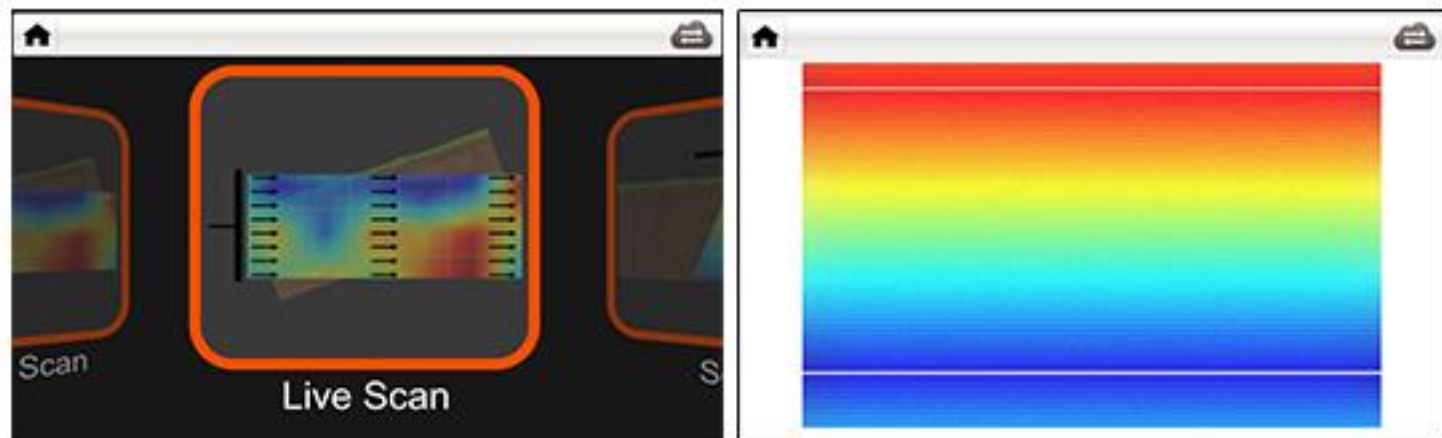
- ☑ You can scan using live system or sonar directly.
- ☑ The external memory (flash memory) must be connected to the device in order to use 3D ground scan, and it won't work without the presence of external memory to store information.
- ☑ Use live scanning when you want to scan large distances, which can save time for you
- ☑ It is also preferable to use sonar scanning program when searching for large targets and voids, use this before 3D ground scan to save time, effort and ease of detection



1 Live scan program

After switch on the device and set date and time settings, we open the sensors vertically, about 20 cm high on the ground then touch the Live Scan icon on the screen, then Live Search button on the main device and wait for 10 seconds for ground balance to identify nature of soil, then start the surveying. So that we notice the image directly during the search and we can return and finish the search by pressing the return key.

The top left of the screen and the back button on the device panel



2 Sonar scan program

After switch on the device and set date and time settings, we open the sensors vertically, about 20 cm high on the ground then touch the Sonar Scan icon on the screen, then Live Search button on the main device and wait for 10 seconds for ground balance to identify nature of soil, then start the surveying. So that we notice the image directly during the search and we can return and finish the search by pressing the return key.

The top left of the screen and the back button on the device panel



ROYAL ANALYZER BASIC

- Easy to use and accurate in performance to reach for the target
- Durability and rigidity of the device and resistant to shock and breakage
- The best device for use in all kinds of soils
- Modern US technology and accurate international manufacturing
- 3-years warranty

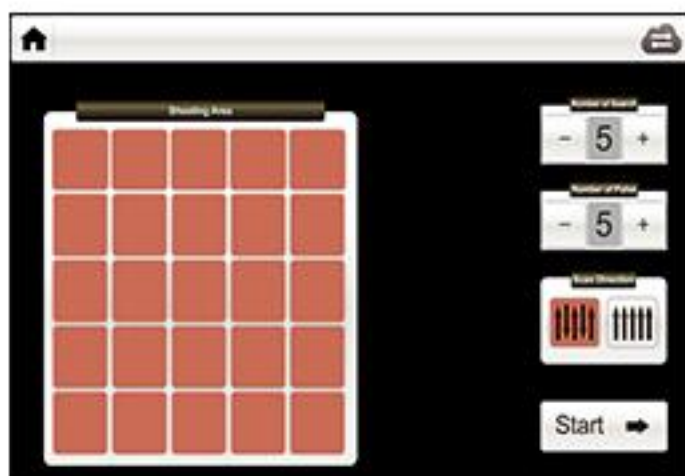
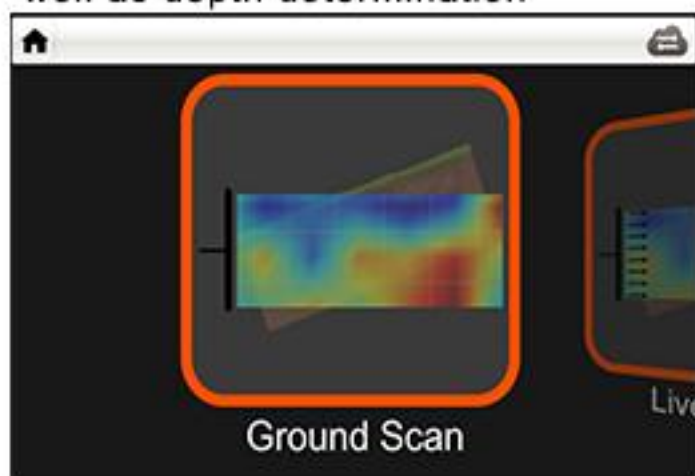


③ 3D Ground scan program

There are two methods of scanning on device panel
(Automatic search and Manual search)

✓ Automatic search

First of all, make sure that the external memory(Flash Memory) is connected to the device, because the scan won't be conducted in order that it does not exist. After confirming the memory connection, we select the ground scan program, then appear two windows, one to start new scan and the other to open an old scan and previewed and analyzer it. To open new search we press in (New Scan), then select the number of searches and steps to the area to be scanned as we choose the search method either in one direction or in two directions. Then touch the start button on the screen, and select from the top of the screen the type of soil to be scanned in order to get the most accurate results in the searching area as well as depth determination



Then touch the start button on screen, and choose from the top of the screen type of soil to be scanned for accuracy in result and depth ,then we open sensors vertically close to the ground about 22 cm high.

Preferably scanning from north to south, for easily signal capture , after that we click on automatic scan button on the main device panel and start searching. When we complete the scan, the storage icon appears at the top left of the screen. Press back button on the device to end scan process.

✓ Manual search

It is similar to automatic scan steps, but we need to press the button below the handle for each step, until the end of the scan and appear the storage icon at the top of the screen, and finally preview the result

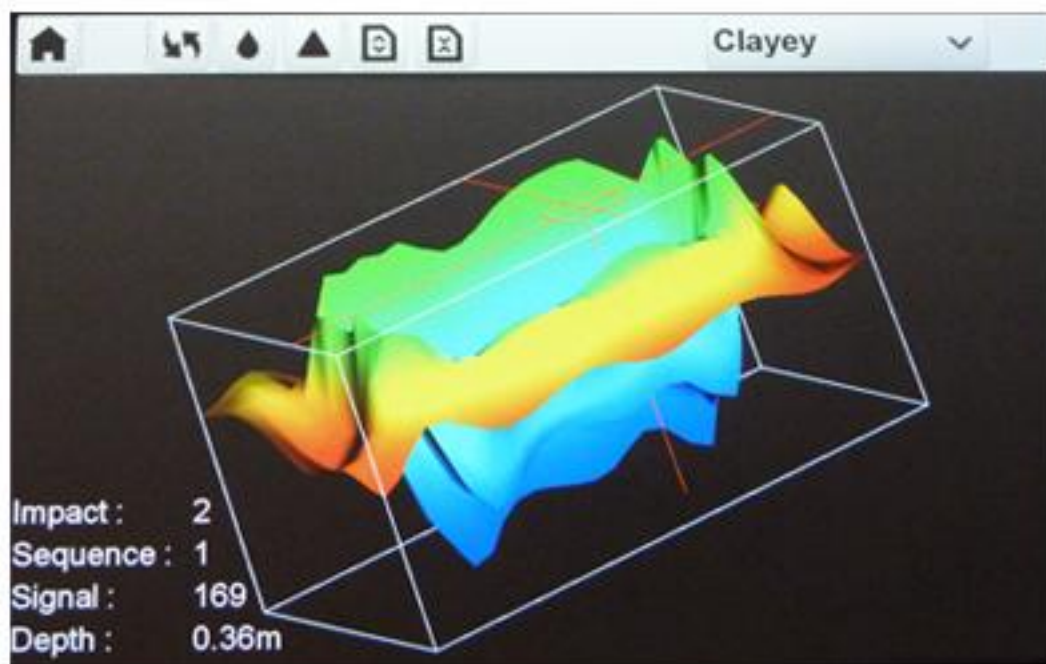
Analysis and interpretation of graphs

When you preview the image you can see the following colors

Red – Orange – Yellow - Dark blue - Light blue – Green

The **red color** : is a symbol of metals in general, **Orange** and **yellow**, for metals and mineral soil, **Dark blue color**, for caves and voids, and **light blue** to determine the border of the caves. It also symbolizes the **green color** of the soil .

You can Zoom in and out the image by hand for easy analysis , and you can also move the image to preview it in 3D form, and return to the original image



This information is in different colour options. At first glance it may be difficult to make the distinction between metals and minerals. In some measurements, you can get minerals in a reddish colour. But there are some differences between the metals and minerals, and these differences emerge with the analysis. Some of these differences include.

The graphic representing a special shape is metal data (square, rectangle, circle etc.) If there is a lot of orange or yellow shading around the object in the graphic, it is probably mineral data.

If the object depth is 10 cm, 30 cm in depth in the measurements, the probability of it being a mineral is high.

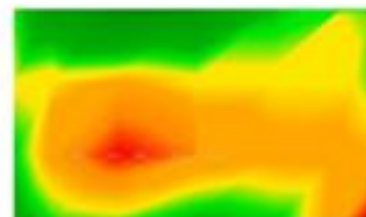
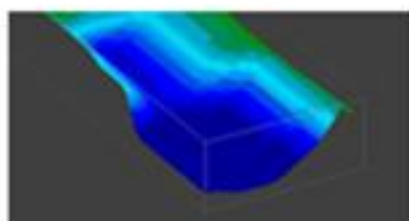
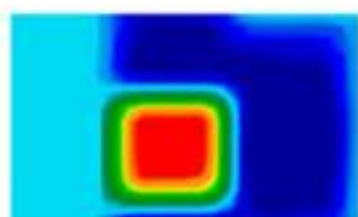
You must obtain the same data in repeat control measurements and confirm.



Analysis and interpretation of graphs

Examples of metal and mineral views have been given in the graphic below. The differences between metal, cavity and mineral has been explained in the table below. The features in the table have been explained with examples on the graphics. Please examine carefully;

METAL	CAVITY	MINERAL
<i>It has a distinct shape</i>	<i>It has a distinct shape</i>	<i>It has no shape, is scattered on the</i>
<i>Has a ceiling-floor structure on the graphic</i>	<i>Has a ceiling-floor structure on the</i>	<i>Has no ceiling-floor structure</i>
<i>Has red colour in the graphic</i>	<i>Has dark blue colour in the graphic</i>	<i>Has orange colour in the</i>
<i>The graphic clearly continues down, has a bottom plane</i>	<i>The graphic clearly continues down, has a bottom plane</i>	<i>The graphic is usually superficial, it does not create a plane</i>
<i>There is a BLUE reflection on the graphic</i>	<i>There is a GREEN reflection on the graphic</i>	<i>There is no reflection on the graphic</i>



Note :

To confirm the existence of the target, care must be taken to ensure that the shape of the target is geometrical. In addition to the signal number in the photo that taken

For example, if the signal number is high relative to the rest of the points of the site indicates that the target is precious

However, if the signal number is low, it indicates that the target is a hollow cavity



Important notes about using the device

① ORDER OF SIGNAL NUMBERS

There are no specific rules regarding the number of signals. But there are different perspectives to be considered. There are for example; the length of the area measured and the size of the objects you are searching for.

The optimal distance between two signals is 20 to 30 cm.

The lower the distance between the two pulses, the more accurate the graphical representation will be. If you are looking for small objects, you must select a small distance, and if you are looking for large objects, you must increase the distance between two signals.

② ANALYSIS AND INTERPRETATION OF MEASUREMENTS

You must obtain information about the area to be measure. For example, it must be at least 100 m away from high voltage transmission lines, base stations, and influencers such as electromagnetic pollution.

For exact values to be received regarding depth measurement, if there is an element then the object must be in the centre of the graphic. In order to certain your work, you should at least triple check your work.

The data from the same places should be the same as each other.

③ DEPTH MEASUREMENT

To see the depth of any point from the captured image, just touch this point twice in sequence it will appear below on the left of screen

(depth, signal number, and longitude and latitude coordinates) of the desired point.

④ BATTERY STATUS ALERTS

Green Color : Indicates that the battery is full.

Blue Color: Indicates that the battery is in good charging condition.

Red color: low and must be recharged so as to get the best results.

Illustration of battery status



Important notes about using the device

5 General information about usage

- ☑ There are some icons on the top of the screen, especially the exit of the program and save in memory and remove the effects from Image, filtering, image sharpening and 3D image controlling.
- ☑ You can see any image stored on flash memory when you open the 3D scan program, where you can select image and open it.
- ☑ You can clean the flash memory by connecting it to any computer and delete its contents.
- ☑ To close the device after finishing work, go to close icon and touch it and wait until the red light is turned off on the device, then close the device from the main key in the handle and finally disconnect the battery.
- ☑ As with all electronic devices, it must be stored in its original bag.
- ☑ The company assumes no responsibility for liability in usage areas requiring legal obligations. The legal requirements must be fulfilled by the user in accordance with legislation. Our company is not responsible for any crime or act of criminal nature.



ROYAL ANALYZER BASIC

This device is designed to work for all severe environmental conditions it is also suitable for all work soil conditions around the world including so basalt rocks and soil with a metallic nature that is difficult On most other devices



This device was provided with the latest scientific methods to innovative analysis of the targets discovered and determine what it is, whether it is valuable or cheap goals which your time and effort





BR SYSTEM

Tel : +16029105755

Mob : +15208005005

Email : info@brdetector.com

Website : www.brdetector.com

